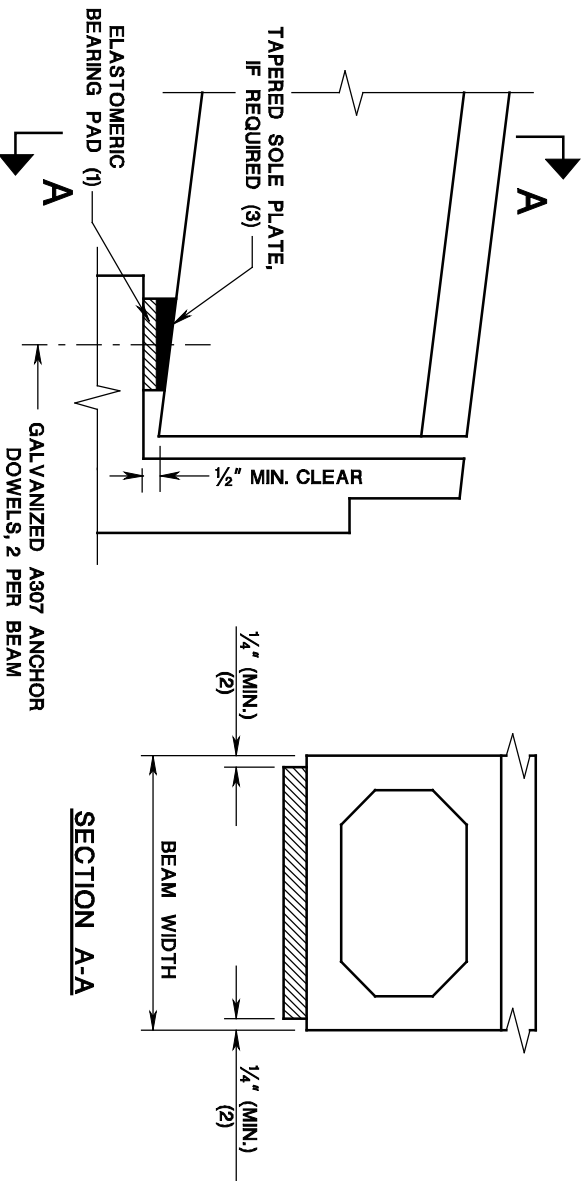


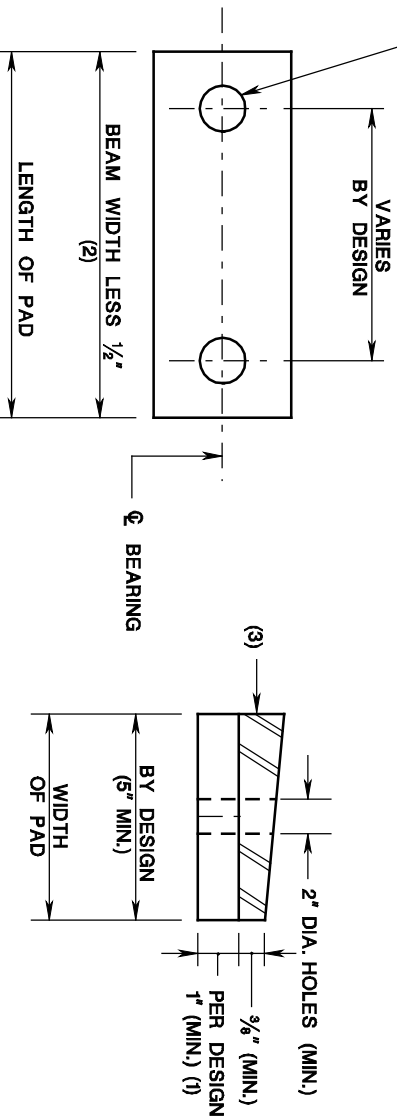
**ELASTOMERIC BEARING PADS FOR
PRESTRESSED CONCRETE BOX BEAMS**

ISSUED: 2009

PLATE
3.10-9



DIAMETER OF HOLE EQUALS DIAMETER OF DOWEL PLUS TWICE THE HORIZONTAL MOVEMENT OF THE DECK WITH A MINIMUM OF 2"



SECTION THROUGH
REINFORCED BEARING PAD

NOTES:

1. THE TAPERING OF ELASTOMER LAYERS IS NOT PERMITTED FOR LAMINATED (REINFORCED) ELASTOMERIC BEARING PADS. TAPERED EXTERNAL SOLE PLATES OR GROUT PADS MAY BE UTILIZED IF NECESSARY. REINFORCED ELASTOMERIC BEARING PADS SHALL BE DESIGNED IN ACCORDANCE WITH THE CURRENT AASHTO LRFD BRIDGE DESIGN SPECIFICATIONS. HOLES SHALL BE DEDUCTED WHEN COMPUTING THE SHAPE FACTOR.
2. SMALLER LENGTH BEARING PADS MAY BE UTILIZED PER DESIGN REQUIREMENTS, EXCEPT THAT THE EDGES OF THE BEAM SHALL NOT OVERHANG THE BEARING PAD BY MORE THAN 6".
3. TAPERED SOLE PLATE SHALL BE BONDED TO THE ELASTOMERIC BEARING PAD AND SHALL BE GALVANIZED. MINIMUM THICKNESS OF SOLE PLATE SHALL BE $\frac{3}{8}$ ".